

**Minutes**  
Of the  
**NORTHEAST STEEL BRIDGE COLLABORATION**

Meeting of October 23, 2003  
Manchester, NH

The morning session of this, our tenth meeting of the NESBC, was composed of one of our task groups having their own meeting to discuss their own agendas. The group was TG-1 Details with Chairman Paul Rimmer. The minutes of this meeting is attached.

The General Session began with a self-introduction of the 17 participants.

Task group chairs, Mike Culmo, Denis Dubois, and Paul Rimmer then gave a brief report on the activities of their task groups.

We then heard a presentation by Ann Petroski of Quality Management Company. She was assisted by Terry Logan, also of Quality Management Company. Ann gave the group an overview of the AISC program for Standardization and for their Audit Program. She also talked about the Certification process of AISC. Far be it for me to try to summarize her presentation but I personally found it to be very informative from a designer background.

I then asked each State to fill out the handout for determining the status of their State's implementation of AASHTO/NSBA documents and forward them to be as soon as they could. I explained I am trying to maintain a current implementation status of the documents and would appreciate their assistance.

I also asked for a discussion relative to ideas to inject new life into the NESBC group. I said that I thought both the National NSBA and the NESBC regional group appear to me to be slowing down and losing some of their earlier enthusiasm. Not much discussion ensued by the group, but I asked each individual to think about it and let me know if they have any thoughts on the subject.

Mike Culmo volunteered to make a presentation at our next meeting on the Effects of Super Load Permit Trucks on Steel Bridges.

The meeting closed about 2:30 PM.

Please forward any comments or revisions to:

Larry Roberts, NESBC Chairman  
Louis Berger Group  
Email: [LRoberts03@Adelphia.net](mailto:LRoberts03@Adelphia.net)  
Tel: 207-377-8752

## ATTENDEES AT GENERAL MEETING

<u>Name</u>	<u>Company</u>	<u>Telephone</u>
Larry Roberts	Louis Berger Group	207-377-8752
Paul Rimmer	New York Dept of Transportation	518-457-4526
Denis Dubois	Maine Dept of Transportation	207-287-2160
Sherward Farnsworth	Vermont Agency of Transportation	802-828-3874
John Hand	Eastern Bridge	603-542-5202
Scott Krause	High Steel Structures	717-399-4116
Mike Culmo	CME Associates	860-928-7848
Robert R. Aubrey	New Hampshire Dept of Transportation	603-271-2731
John Piccolomini	Tuckerman Steel Fabricators	617-569-8383
Bill Wallhausser	KTA Tator	508-541-8644
John Puffer	Pennoni Associates	603-781-6491
Jerry Zoller	New Hampshire Dept of Transportation	603-271-2731
Jay Mellinger	Pennoni Associates	610-659-5517
Mary Grieco	Massachusetts Highway Dept	617-973-7595
Adam Stockin	New Hampshire Dept of Transportation	603-271-2731
Ann Petroski	Quality Management Company	
Terry Logan	Quality Management Company	

**NORTHEAST STEEL BRIDGE COLLABORATION  
TG-1 DETAIL COMMITTEE MEETING  
October 23, 2003**

**Meeting Minutes**

Attendees

Paul Rimmer	NYSDOT	(518) 457-4526
Scott Krause	High Steel	(717) 399-4116
Denis Dubois	Maine DOT	(207) 624-3406
John Piccolomini	Tuckerman Steel Fab.	(617) 569-8373
John Hand	Eastern Bridge	(603) 542-5202
Bill Wallhausser	KTA Tator	(508) 541-8644
John Puffer	Pennoni	(603) 781-6491
Jerry Zoller	NH DOT	(603) 271-2731
Jay Mellinger	Pennoni	(610) 659-5517
Mary Grieco	Mass. Highway	(617) 973-7595
Larry Roberts	Louis Berger Group.	(207) 377-8752
Sherwood G. Farnsworth	VT DOT	(802) 828-3874

Introduction: Paul Rimmer

Task Group One Details

1. Radius Cope for Stiffeners - Scott Krause
  - Reasons for proposal
  - Accepted by SCEF
  - Ease of paint application
  - Use of automated burning equipment
2. Tub Girder Standard
  - Tub Girder Contract Plan Presentation
3. Exodermic In Contract Applications
  1. Rehab applications. Increase load rating of structural members
    - Girder deck replacement rehabilitations
    - Truss rehabilitations
  2. Suspension bridges as main flooring
4. Truss Detailing
  - End floorbeams truly vertical
  - Intermediate column perpendicular to bottom chord; not truly vertical
  - Detailed to the deflected shape or cambered shape.
  - Assembled in laydown vs. field fitted truss in upright position

## Task force 4 Electronic Transmittal And Approval

WPS approval. FTP is cumbersome.  
PQR for High Steel large number of welders many qualified in all positions  
Difficult with large number of qualifying welders  
New Jersey wishes Autocad as Vector Final Submission  
Electronic field verification global coordinate system  
Coordinate transfer from field to shop

## Task Group 8

Truss Galvanized Bolts  
Cleaning with weak borax solution  
Use of cap plastic to protect bolt - expensive and hinders inspection  
Zymax proprietary blend

## Task Group 10

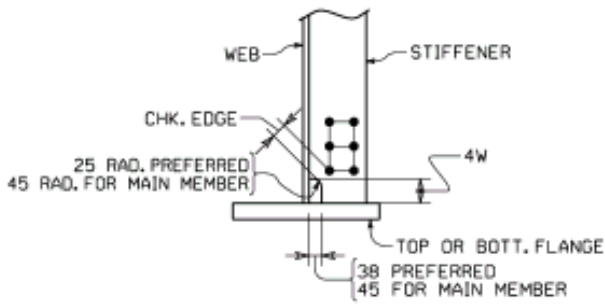
Crane changes legal issue - drawing must be resubmitted  
Professional engineering signature  
Reprofiling - when is erection completed

- when crane is released
- when bolts are torqued
- when State accepts profile/structure

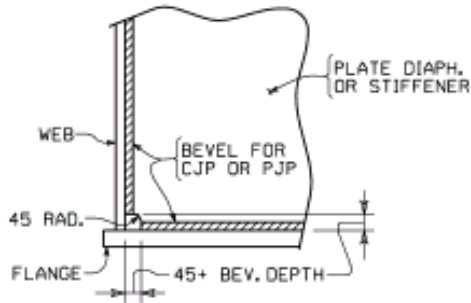
## Political Action

Opportunities  
Ramifications

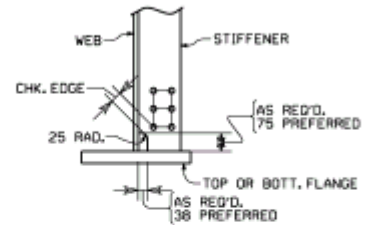
NEW YORK



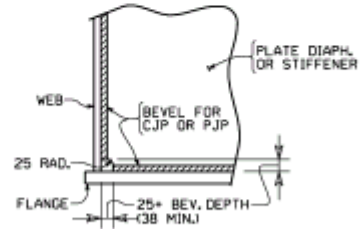
FILLET WELDED TRANSVERSE STIFF.  
(USE STD. FILLET WELD TERMINATIONS)



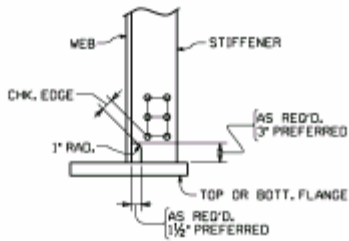
FULL PENETRATION WELDS



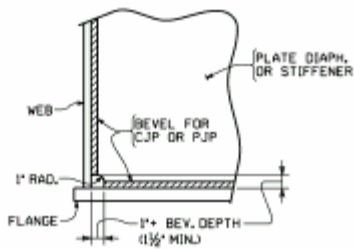
FILLET WELDED TRANSVERSE STIFF.  
(USE STD. FILLET WELD TERMINATIONS)



FULL PENETRATION WELDS



FILLET WELDED TRANSVERSE STIFF.  
(USE STD. FILLET WELD TERMINATIONS)



FULL PENETRATION WELDS